

INFRARED THERMAL IMAGING USB2.0 CAMERA



ARTCAM-320-THERMO Infrared thermal imaging camera is no need to use an image input board to transfer images. Images are directly transferred to a PC by USB interface. You also can get microbolometer's RAW data directly(14bit).



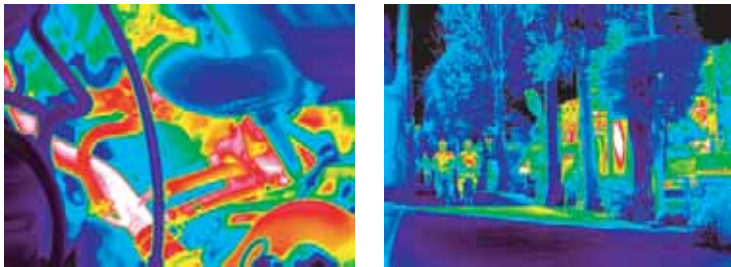
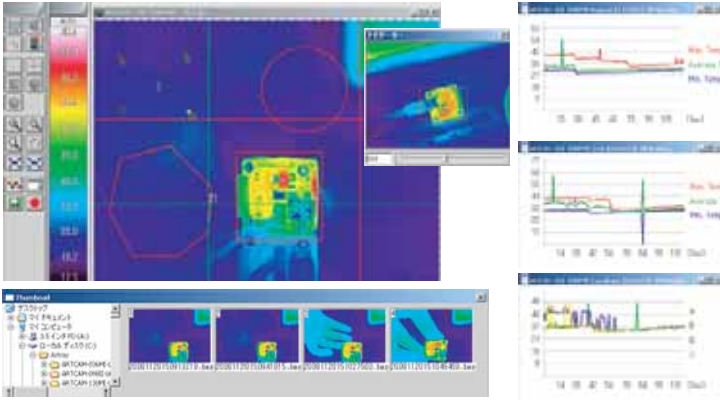
VGA Size

GigE
Coming Soon!

ARTCAM-640-THERMO

Effective Pixels : VGA 640(H)x480(V)
Field of View : f=50mm: 17°(H)x13°(V) (Option)
Dimension : 82(W)x84(H)x119(D)mm

▼Attached viewer software



MADE IN JAPAN



ARTRAY Co., Ltd.

1-17-5 Kouenjikita Suginami-Ku Tokyo 166-0002, Japan
TEL : +81-3-3389-5488 FAX: +81-3-3389-5486
Email : sales@artray.us

ARTCAM-640-THERMO / ARTCAM-320-THERMO

- Detector : Unti-Cooling Microbolometer (Built in peltier device)
- Frame Rate : 25FPS
- Pixel Pitch : 23.5 μm
- Output : 14 bit digital output
- Interface : USB2.0 Bulk transfer, streaming output
- Power : DC12V/1A
- Tunning Temperature : -20~50°C Below 80% (No condensing)
- Measure Range : ±5%
- Dynamic Range : L Range: -40~150°C, H Range: 0°C~540°C
- Attached Items : Device driver, Viewer software,
+12 1A external DC provider, USB cable
- Option : Software Development Kit(SDK)
IR Lens (Germanium) f=50mm, 25mm, 16mm,
x1.5Micro Lens
- Operating Systems : Windows XP, Windows VISTA
- Recommended CPU : Above 2.8GHz



QVGA Size

ARTCAM-320-THERMO

Effective Pixels : QVGA 320(H)x240(V)
Field of View : f=8mm: 50°(H)x37°(V)
Dimension : 65(W)x65(H)x120(D)mm

GigE
Coming Soon!

USAGE

- Quality Control
- Surveillance
- Building Inspection
- Medical Service
- Diagnosis
- Research & Development
- Image Processing
- Fire Alert

