

ARTCAM-036MI-REC: Recording software
designed for
USB2.0 VGA CMOS Camera
ARTCAM-036MI/022MINI

ARTRAY CO., LTD.

Ueno bldg, 1-17-5 Kouenjikota Suginami-ku, Tokyo 166-0002 Japan
Tel: (81)3-3389-5488 Fax: (81)3-3389-5486
Email: artray@artray.co.jp
URL: <http://www.artray.co.jp>

Summary

Thank you for purchasing "AR-REC_036MI:Recording Software".

This booklet explains how to use the application software of "AR-REC_036MI"

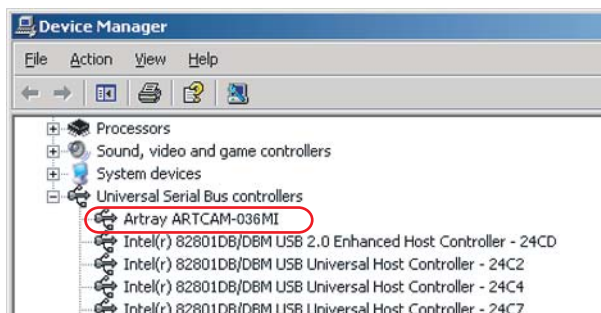
Regarding references to hardware, please refer to the exhibit or contact our marketing representative.

"AR-REC_036MI" is protected by copyright law and international treaties. Unauthorized reproduction or distribution of the program or booklet may result in severe civil and criminal penalties.

Copyright (c) 2007 ARTRAY CO., LTD.

ARTCAM-036MI/022MINI Camera Setup

- (1) Connect ARTCAM to USB2.0 port.
ARTCAM-036MI/022MINI is only compliant with **embedded USB2.0 interface**. (e. g. Intel) USB2.0 of PCI/PCMCIA type is NOT supported.
System requirements: CPU=1.7 GHz or higher, OS=Windows2000/XP
- (2) Insert the "Installation CD" and install device driver
- (3) Specify "ARTCAM-036MI-DRV-V***" in the CD.
(Details of installation are explained in the following pages)
- (4) To confirm installation, find ARTCAM-036MI in USB controller in device manager
(Start -> Control Panel -> System -> Hardware -> Device Manger -> USB Controller)



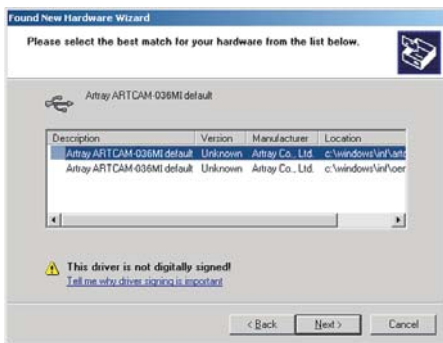
- (5) Install USB key. Double-click "WkRuntime.exe" and follow the instruction.
(Details of installation are explained at page 6.)
- (6) Copy "ARTCAM-036MI-REC-EXE-V*****" folder to your hard-disk.
To start the Viewer Software, double-click "AR-REC_036MI.exe" in the folder.

USB2.0 Camera Driver Installation

Connect your camera to USB2.0, and following screen pops up



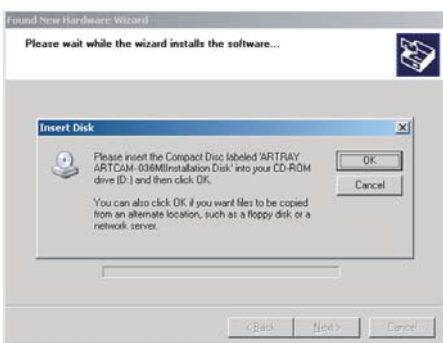
(1) Click "Next", and follow the screen.



(2) Click "Next"



(3) Click "Continue Anyway"



(4) Please place ARTCAM CD-ROM into the CD-ROM drive then Click "OK"



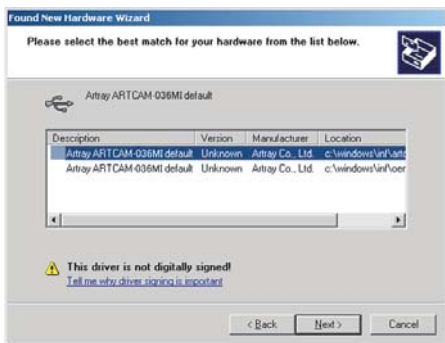
(5) Click "Finish"

USB2.0 Camera Driver Installation

Connect your camera to USB2.0, and following screen pops up



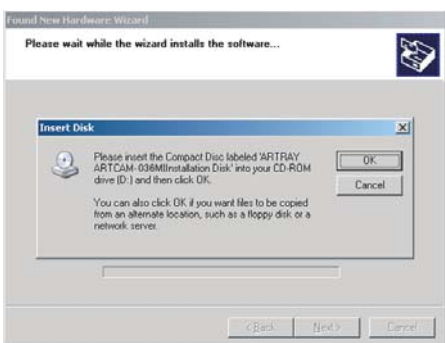
(1) Click "Next", and follow the screen.



(2) Click "Next"



(3) Click "Continue Anyway"



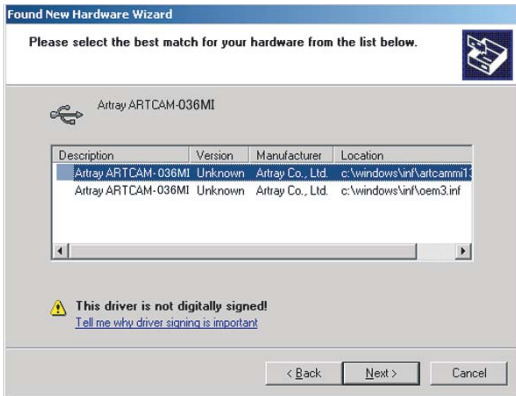
(4) Please place ARTCAM CD-ROM into the CD-ROM drive then Click "OK"



(5) Click "Finish"



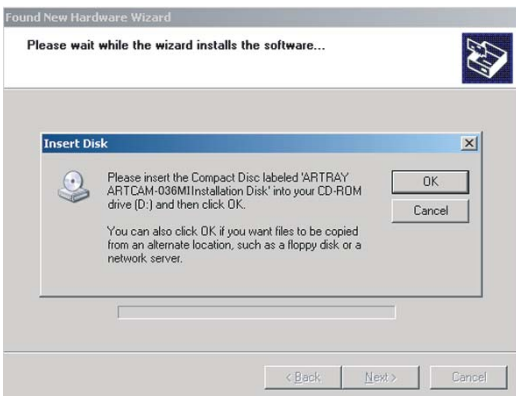
(6) Click "Next"



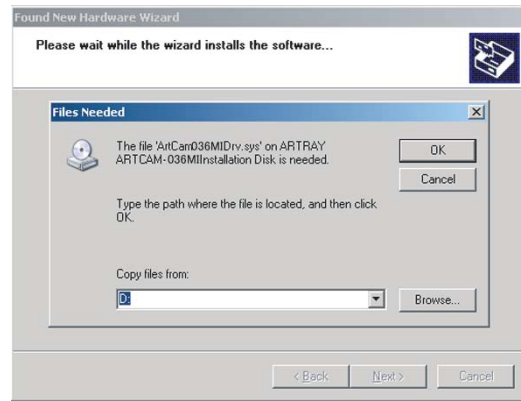
(7) Click "Next"



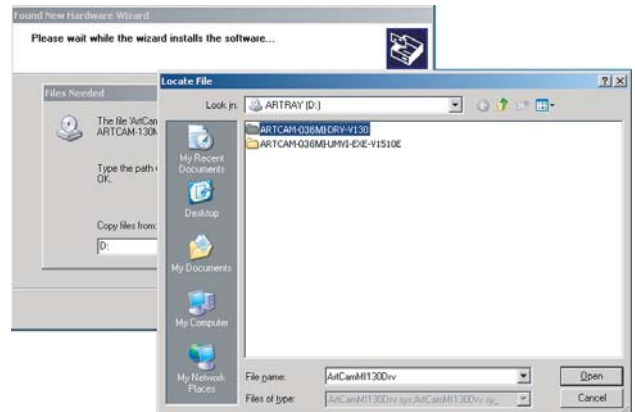
(8) Click "Continue Anyway"



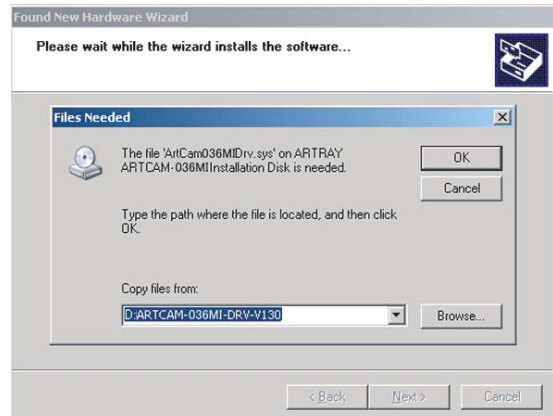
(9) Click "OK"



(10) Click "Browse" and specify "ARTCAM-036MI-DRV-V***" folder from CD-ROM drive.



(11) Click "Open"



(12) Click "OK"

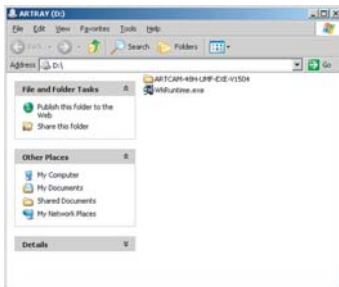


(13) Installation is now complete. Click "Finish" to close the installation wizard.

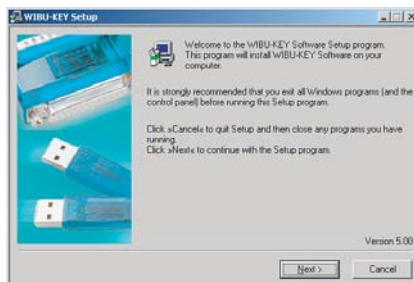
Software installation

1. Insert the "Installation CD"
2. Install USB key. Double-click "WkRuntime.exe" and follow the instruction.
*Do not plug USB key at this stage.

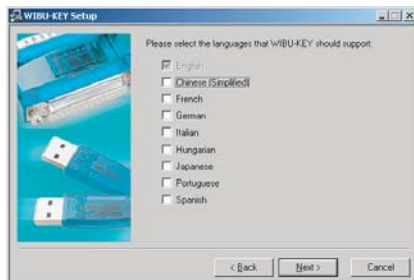
USB key installation



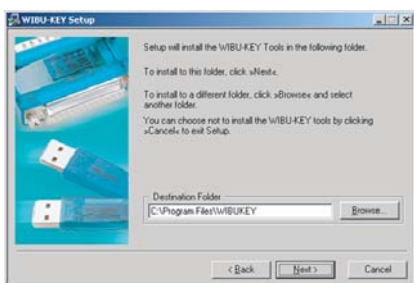
1. Double-click "WkRuntime.exe".



2. Click "Next".



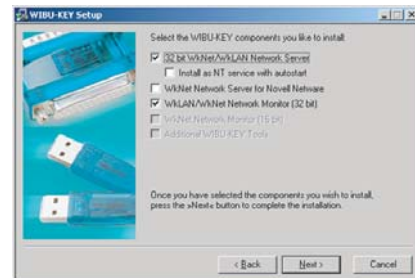
3. Select language.



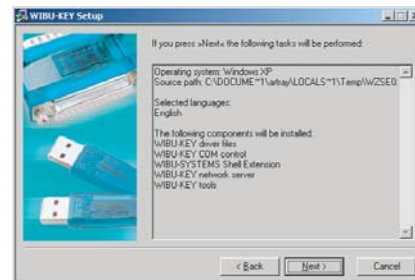
4. Click "Next".



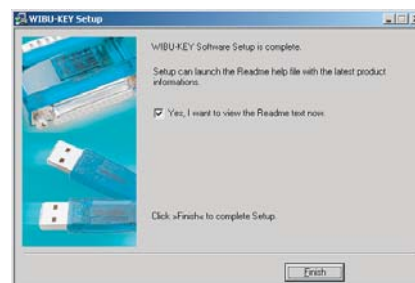
5. Click "Yes".



6. Click "Next".



7. Click "Next".

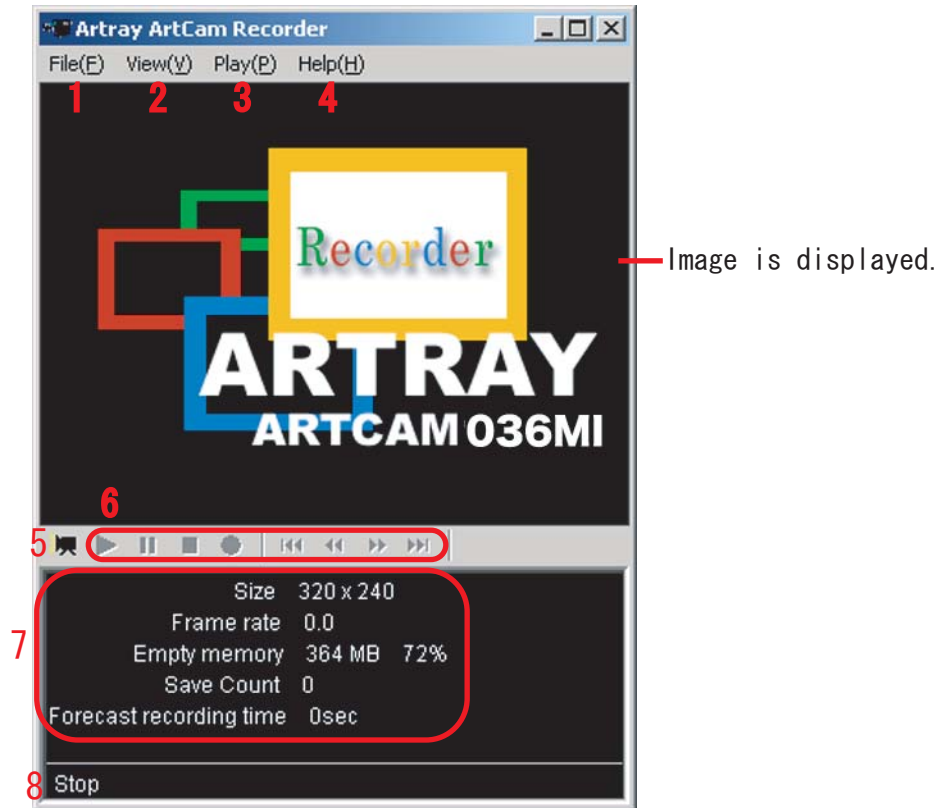


8. Click "Finish".

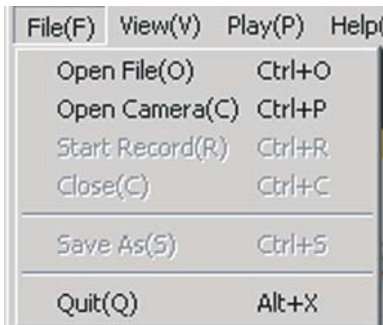
3. Plug USB key and start software.
*Software will not operate unless USB key is plugged.

Window Display

Execute the application and the window below will pop up.
Menus and buttons in grey are not functional.

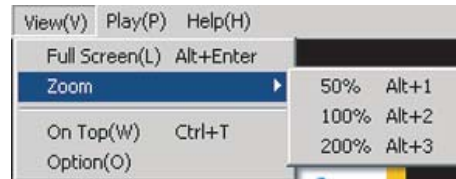


1. Menus regarding files.



2. Menus regarding display.

Settings for movie recording can be adjusted at "Option".
(Refer to "Adjustment of Settings" on P.11).



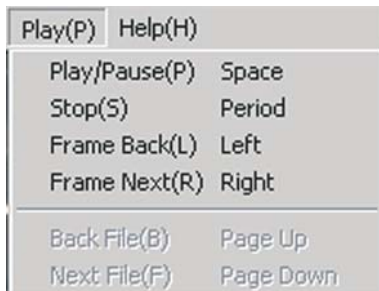
6. These buttons are equivalent to the playback menus.



Starting from left, the buttons represent "Play", "Pause", "Stop", "Record", "Previous movie", "Rewind" & "Fast-forward", "Next movie".

3. Menu regarding playback.

This menu is only functional when movie file is read



7. Starting from top, these menus represent "Size(Resolution of image)", "Frame rate of image (Frame number at playback mode)", "Empty memory", "Save Count(Number of frames saved)" & "Forecast recording time".

*"Forecast recording time" is automatically calculated at recording mode.

4. Version is displayed.

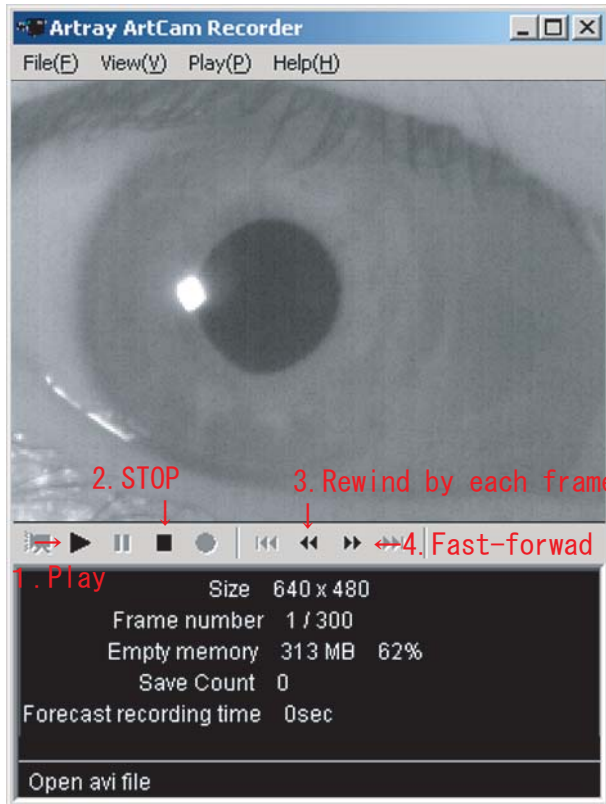
8. Status of application.

5. Switch to recording mode.

Operating Instructions

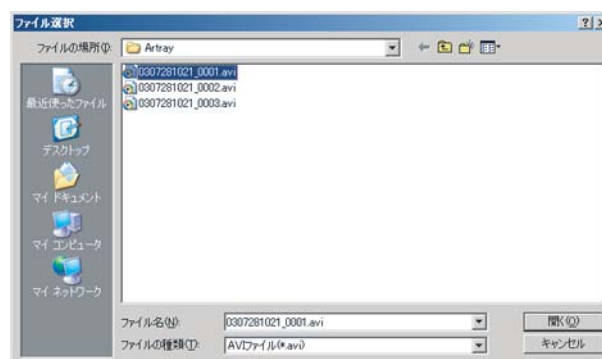
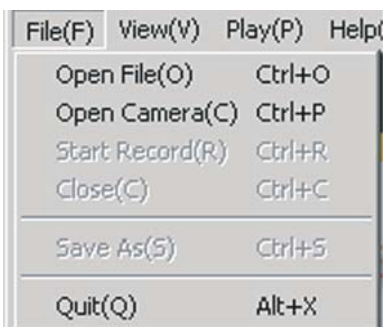
Playback

To stop "Recording" mode, click "File" then "Close" or click "Stop" button.
To play the video which has just been saved, click "Playback" after stopping "Recording" mode.



1. Play
Shortcut: "Space" key
2. Stop
Shortcut: "Period" key
3. Rewind by each frame
Shortcut: "←" key
4. Fast-forward by each frame
Shortcut: "→" key

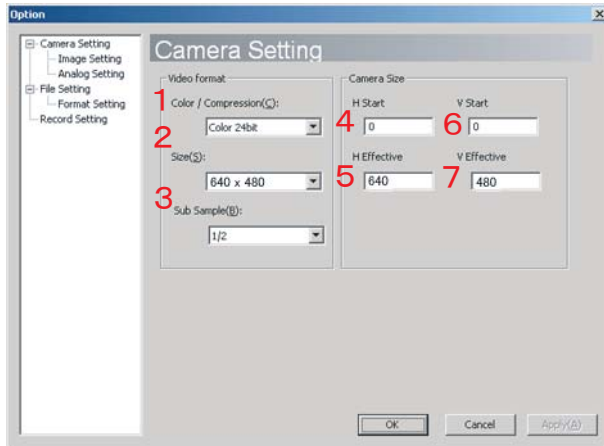
To play other video file, go to "File", "Open file" and select file.



Settings

- ① Open "Option" window by clicking "View" then "Option".
Select menus from the left and display each settings.

Camera settings



1. Select color and compressibility
For color cameras, select "Color 24 bit".
For monochrome cameras, "Monochrome 8 bit".
2. Change output size of image.
By selecting "Customization",
the resolution can be set at customized size
box on the left. Those values are saved.
***Impossible to change size in horizontal (O36MI)**
3. Use sub-sampling function.
Image size will remain same, but the image
becomes rougher. Frame rate will increase.
For O36MI camera,
1/2, 1/4 and 1/8 are available.
(1/1=no sub-sampling)

4. Enter starting pixel of horizontal pixels
5. Enter horizontal pixels
6. Enter starting pixel of vertical pixels
7. Enter vertical pixels

Example

At this point,
horizontal coordinate
is 4 while vertical
coordinate is 6.

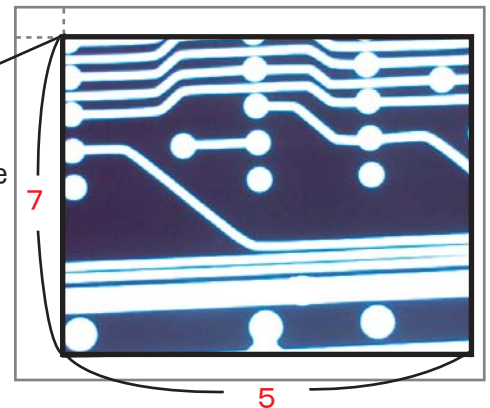
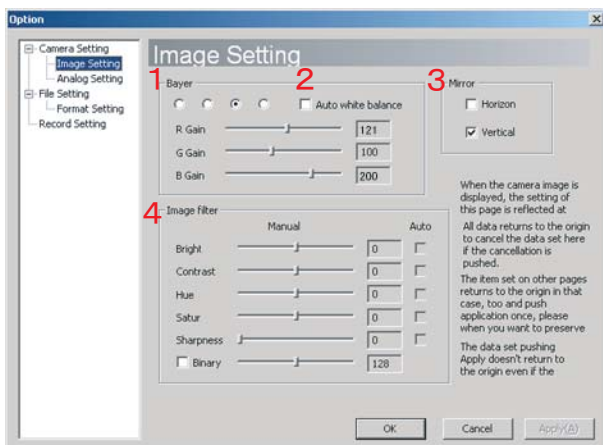


Image settings

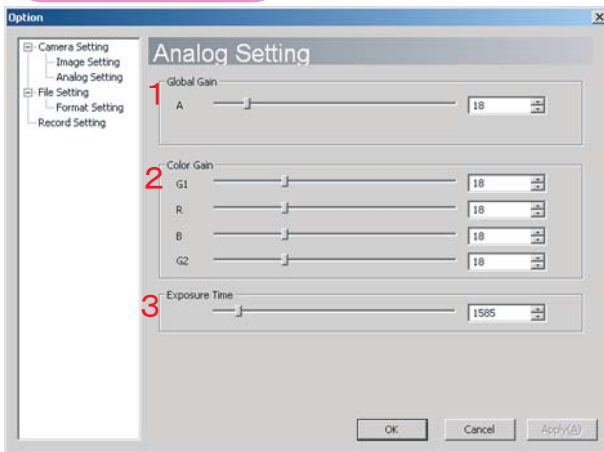


1. Change bayer settings. Bayer settings need to be
adjusted depending on the location of object.
2. Adjust white balance.
3. Change aspect of image
(Lengthwise is selected at default).
4. Adjust filter. Obtain digitalized image
by checking "Digitalization".

***Note:** Filter processing of filter adjustment is only processed within
software. Frame rate is therefore decreased. For normal use,
set the value at 0 (no processing).

Settings

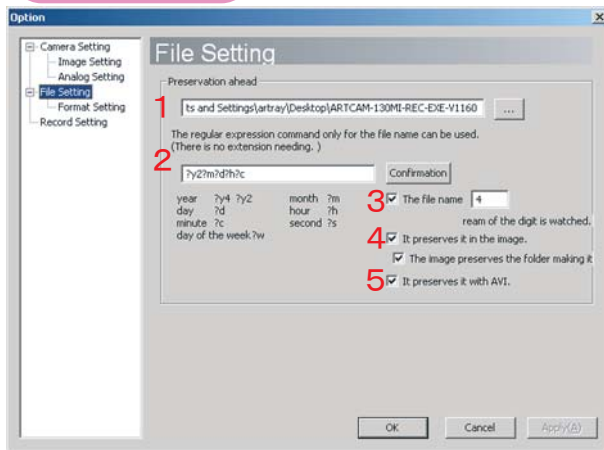
Analog Settings



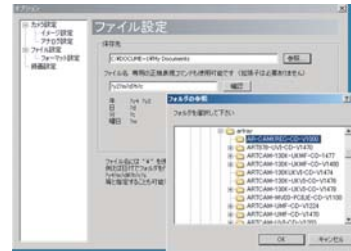
1. Adjust Global gain. (036MI default 32)
Note: Global gain is correlated to each color gain of 2.
2. Adjust color gain
(Not applicable for monochrome cameras)
3. Adjust shutter speed. (036MI default 1099)

※Note: In order to increase frame rate, you need to decrease the size of image as well as shutter speed.

File settings



1. Appoint the folder in which the files are saved. Click "Browse" and select folder.



2. Specify file name.
Click "Check" and confirm the file name to be saved.

Naming files:

You can either specify file name or name the file using date and time.

year	?y4 (4digits)	hour	?h	day	?w
	?y2 (2digits)	minute	?c		
month	?m	second	?s		
date	?d				

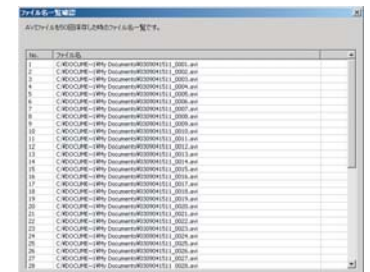


At default, file name is appointed as "?y2m?d?h?c".
If the image is saved at 15:20 on 1/8/05, the file name is saved as "0308011520".

"¥" can be used in the file name.

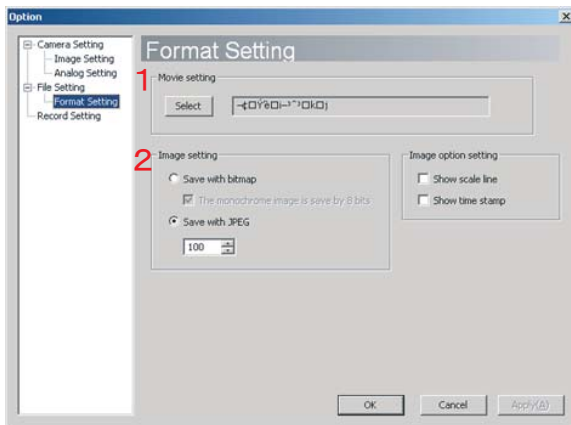
For example, create a folder naming its date. To save the file under the folder using time, appoint "?y4?m?d¥?h?c?s".

3. Check and enter number in the box, sequence number can be added to the end of file name.
4. Check this box, and video file will consist of each frame image (.bmp or .jpg).
You can create a folder within the folder in which video files are saved.
You can save still images (frames) in that folder.
5. Check this box and movie (.avi) can be saved.

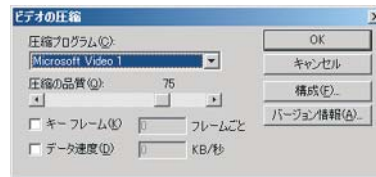


Settings

Format Settings



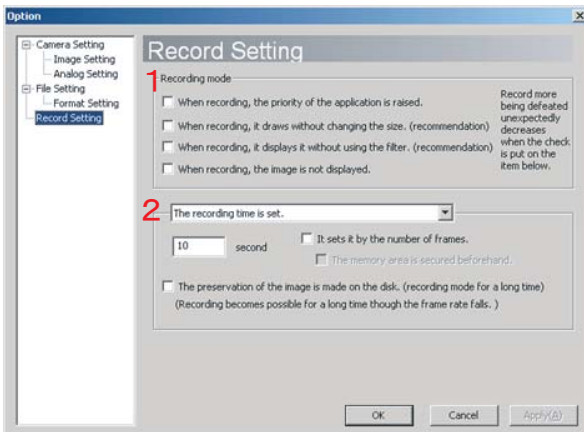
1. Change type of compression for video.
Click "Change" and the window below will pop up.



Select type of compression from pull-down menu. For normal use, select "All frames non-compressed".

2. Set file format for images.
Checking this box creates folder that has same name as AVI file. Each frame is saved as .bmp or .jpg.

Record Settings



1. Set recording mode.
Checking two boxes on top is recommended.
2. Settings regarding recording time:
Select "Set recording time", "Set recording interval" & "Set recording time automatically" from pull-down menu.

To set recording time or interval, enter time (in second) in the box under pull-down menu.

You can also set number of frames by checking "Set number of frames".

If you select "Set recording time automatically", recording time depends on speed of your PC.

ARTRAY
ARTCAM-036MI/022MINI Recorder
2008

ARTRAY CO., LTD.

Ueno bldg, 1-17-5 Kouenjikita
Suginami-ku, Tokyo 166-0002 Japan

TEL : 03 (3389) 5488

FAX : 03 (3389) 5486

<http://www.artray.co.jp>