

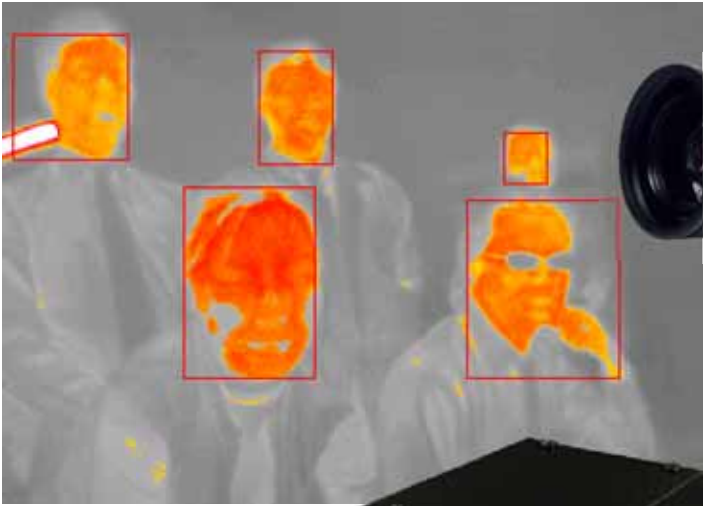
INFRARED THERMAL IMAGING

CAMERA

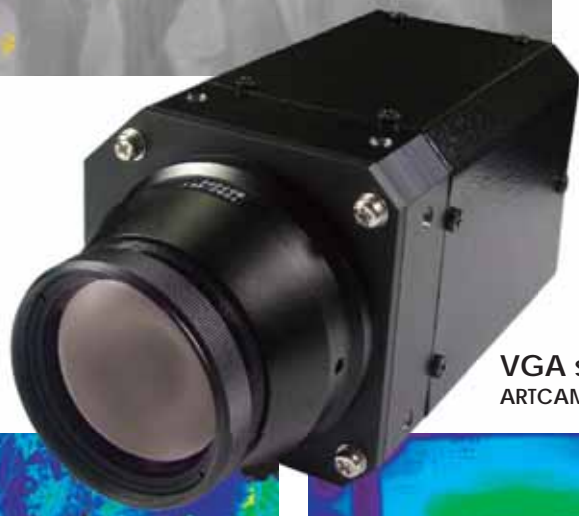
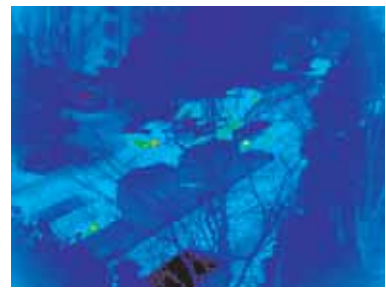
USB2.0 GigE

Made in Japan

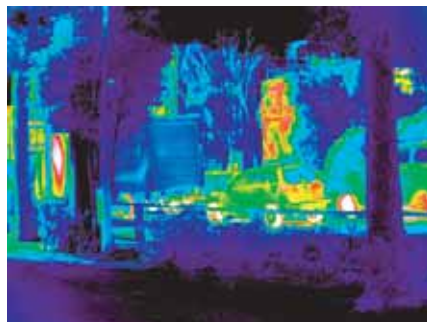
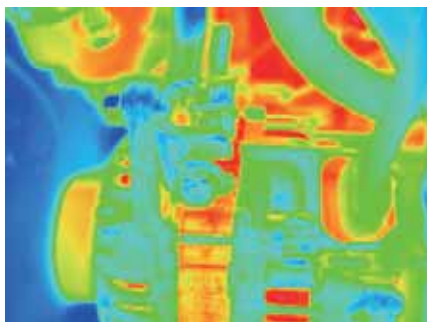
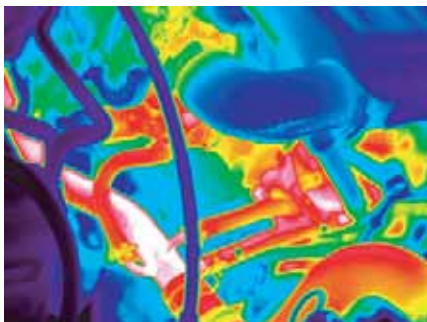
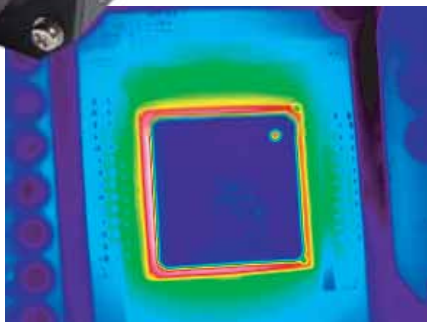
ARTCAM-320-THERMO and ARTCAM-640-THERMO Infrared thermal imaging camera is no need to use an image input board to transfer images. Images are directly transferred to a PC by USB interface. You also can get microbolometer's RAW data directly(14bit).



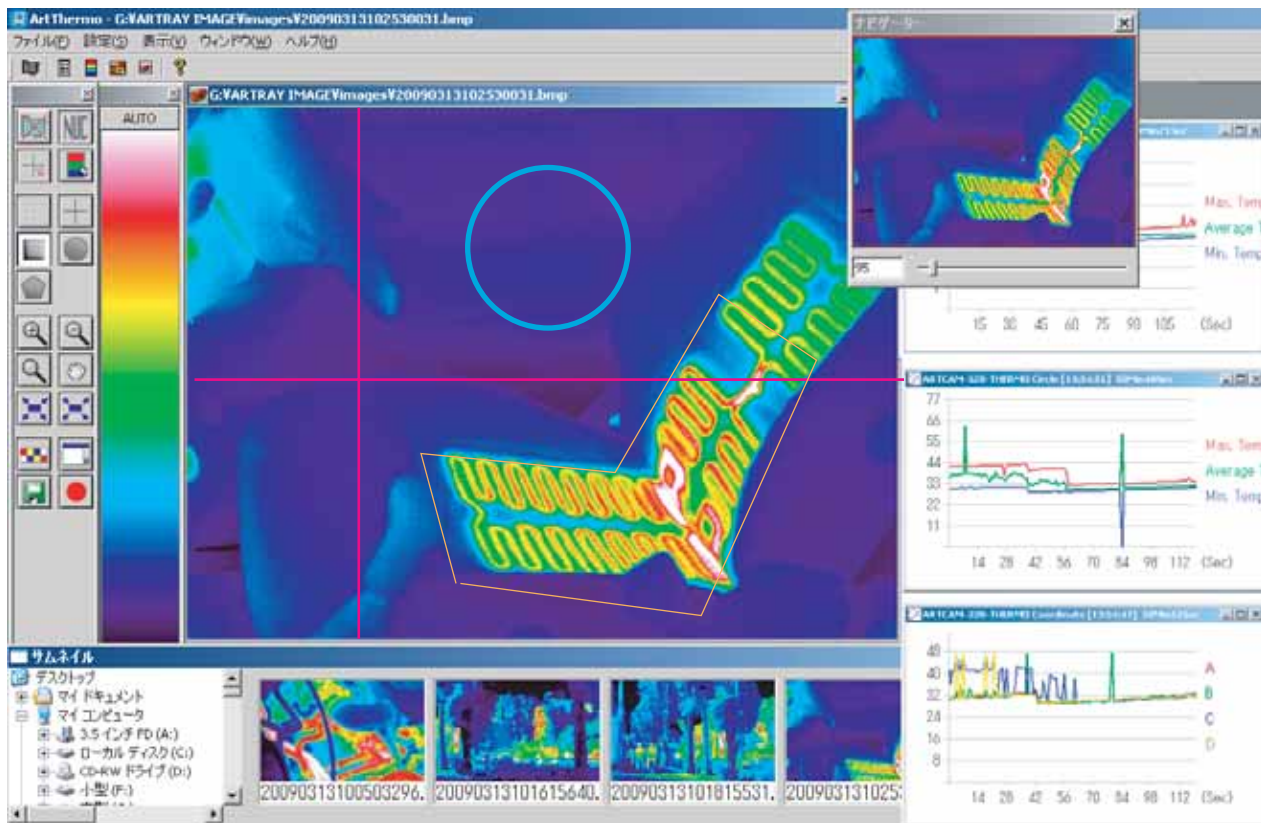
QVGA size
ARTCAM-320-THERMO



VGA size
ARTCAM-640-THERMO



▼ Viewer Software



VGA Size

ARTCAM-640-THERMO

Effective Pixels : VGA 640(H)x480(V)
 Field of View : f=50mm 17° (H)x13° (V)
 Dimension : 82(W)x84(H)x119(D)mm

QVGA Size

ARTCAM-320-THERMO

Effective Pixels : QVGA 320(H)x240(V)
 Field of View : f=8mm 50° (H)x37° (V)
 Dimension : 65(W)x65(H)x120(D)mm

Specification

Detector : Until-Cooling Microbolometer
 (Built in peltier device)
 Frame Rate : 25FPS
 Pixel Pitch : 23.5μm
 Output : 14 bit digital output
 Interface : USB2.0 Bulk transfer, streaming output
 Power : DC12V/1A
 Tuning Temperature : -20~50°C Below 80% (No condensing)
 Measure Range : ±5%
 Dynamic Range : L Range: -40~150°C, H Range: 0~540°C
 Attached Items : Device driver, Viewer software
 +12 1A external DC provider, USB cable
 Option : Software Development Kit(SDK)
 Germanium Lens f=50mm, 25mm, 16mm
 x1.5Micro Lens
 Operating Systems : Windows XP, Windows Vista

Usage

Quality Control
 Surveillance
 Building Inspection
 Medical Service
 Diagnosis
 Research & Development
 Image Processing
 Fire Alert



ARTRAY Co., Ltd.

Ueno Bldg. 1-17-5 Kouenjikota Suginami-Ku Tokyo 166-0002, Japan
 TEL : +81-3-3389-5488 FAX: +81-3-3389-5486
 Email : sales@artray.us URL : www.artray.us

• ARTCAM is ARTTRAY's registered trademark.
 • We might change product's specifications without announcement. Sorry for inconvenience in advance.